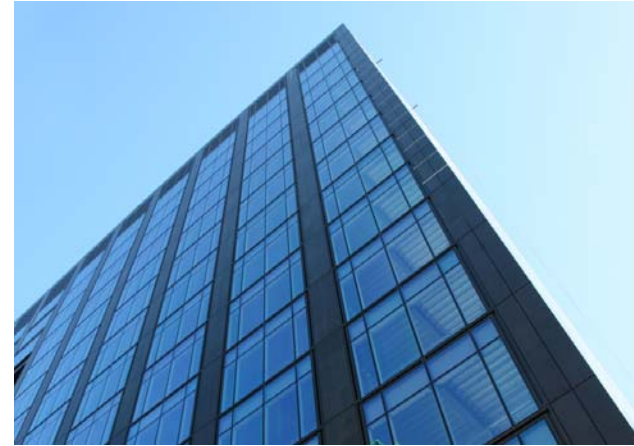




Water view of Montevetro



Glazed elevation



View of unitised glass and stone panels

Montevetro - Dublin

Architect : DEGW

Montevetro is Ireland's tallest office building and is constructed using unitised curtain walling with integrated natural basalt stone cladding. Complex corner panels were factory fabricated as single piece elements. Spandrel elements were created with double glazed unit shadow boxes with a coloured aluminium panel.